

# Specimen Extraction Techniques Utilized in Minimally Invasive Surgery for Women with Uterine Cancer and an Enlarged Uterus

A. Mercier, C. Lam, R. Wenham, H.S. Chon, M Shahzad, Z. Thompson, M. Hoffman



# Disclosures

NONE



## Learning Objective

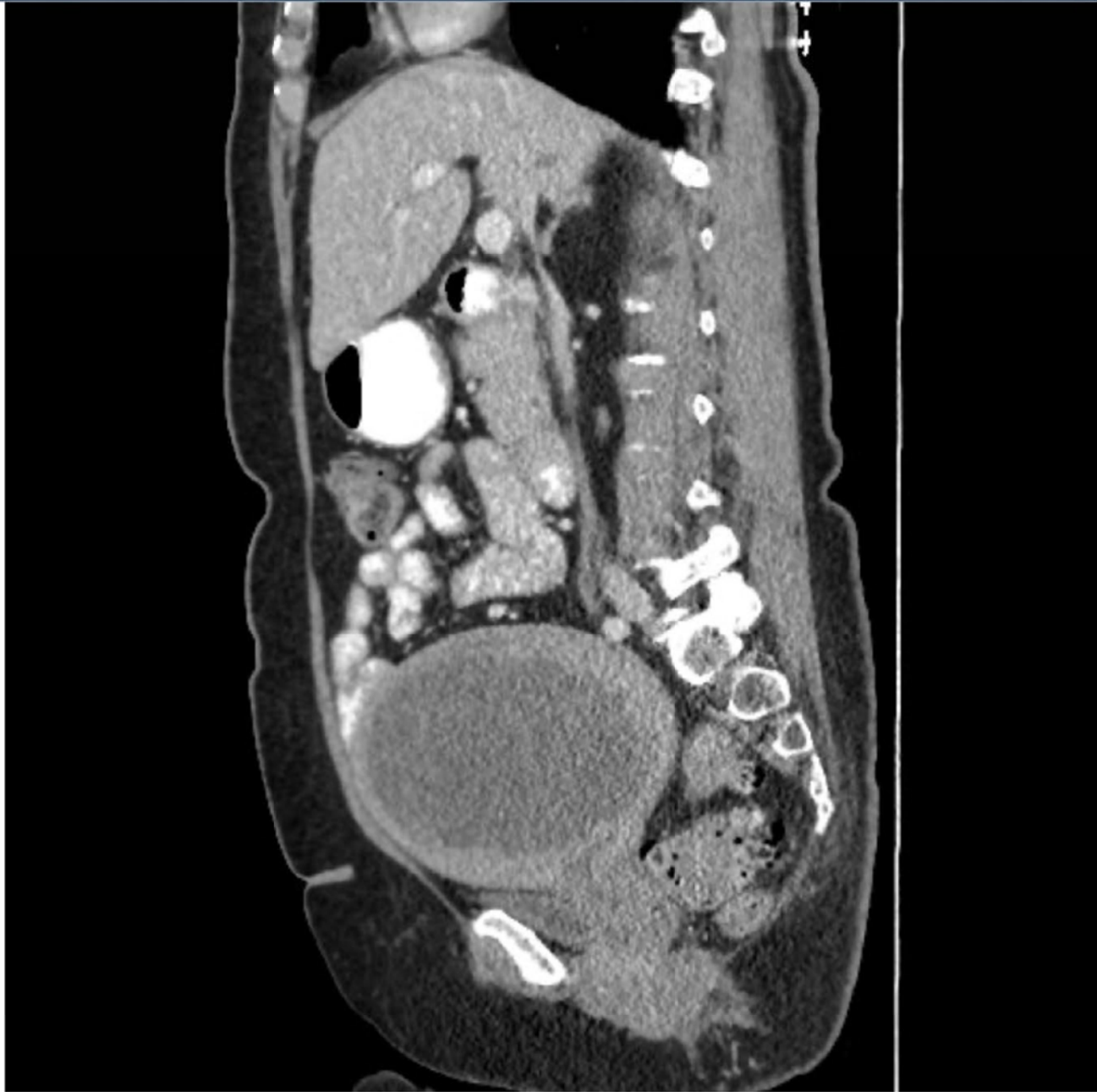
The present study investigates techniques and complications of uterine extraction utilized during MIS for uterine malignancy with a large uterus

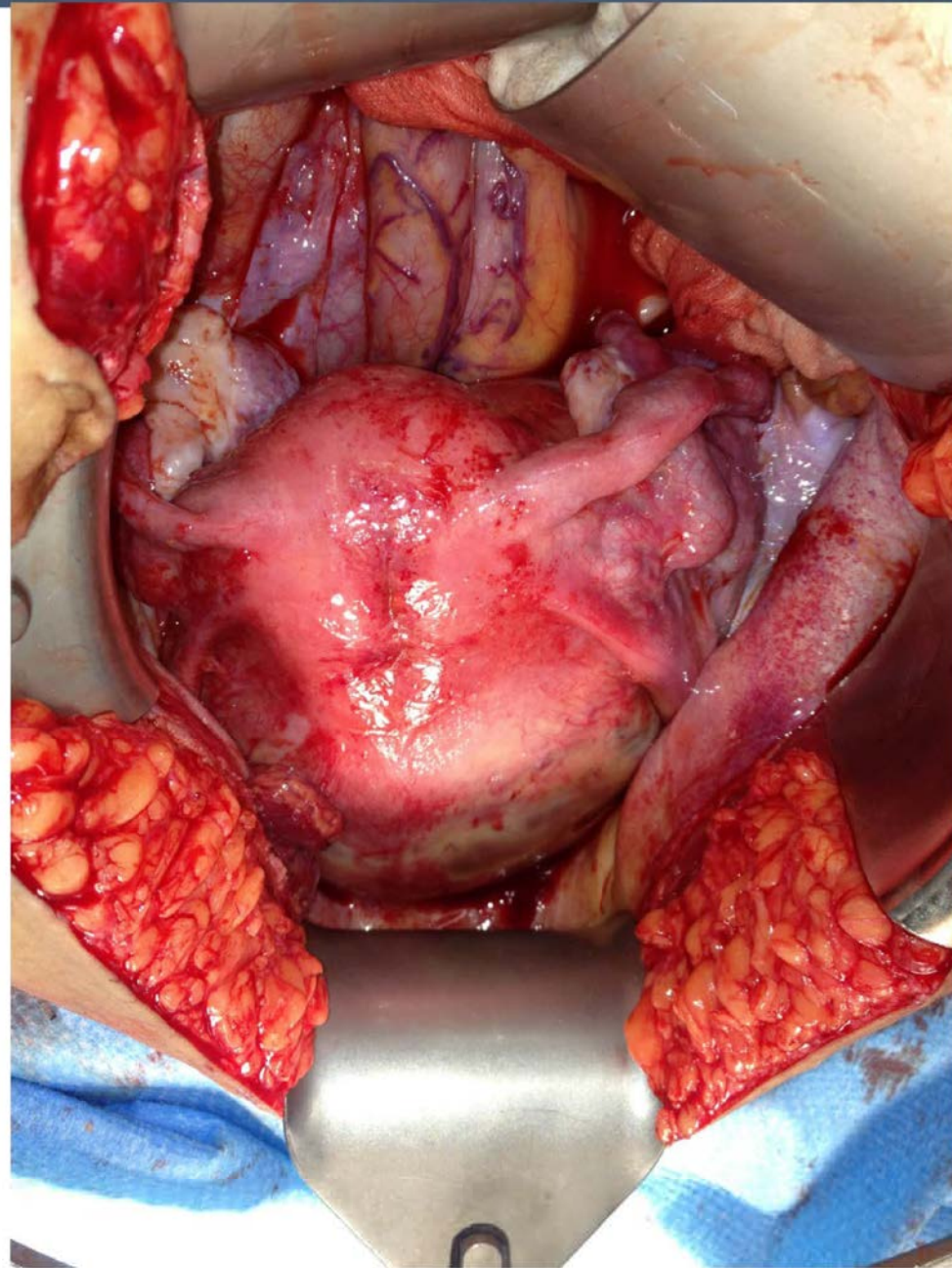


## BACKGROUND

“MIS SHOULD BE EMBRACED AS THE STANDARD SURGICAL APPROACH FOR COMPREHENSIVE STAGING IN WOMEN WITH ENDOMETRIAL CANCER”

ENDOMETRIAL CANCER. PRACTICE BULLETIN 149. OBSTET GYNECOL 2015  
SGO, ASC COC, SGO-GYNECOL ONCOL 2021







## METHODS

- 2016-21 958 PRIMARY SURGERIES FOR UTERINE MALIGNANCY
- 847 (88%) MIS
- TVH (53) EXCLUDED
- 78 ENLARGED (>250G) UTERUS (94%)



# Patient Characteristics

Table 1

Descriptor	<u>N [Min, Max] or Count (%)</u>
Median Age	61.8 years [26.7, 83.5]
Median BMI	38.0 kg/m <sup>2</sup> [19.0, 65.0]
Mode ECOG score	0 [0, 2]



# Surgical Descriptors

<u>Descriptor</u>	<u>N [Min, Max] or Count (%)</u>
Mean specimen weight	407g [250, 1268 ]
Mean estimated blood loss	117cc [15, 500]
Mean length of surgery	180 mins [82, 335]
Mode length of hospital stay	0 [0, 2]
Surgical Modality	
– Laparoscopic	17 (21.8%)
– Robotic	61 (78.2%)
<u>Lymph node dissection</u>	<u>60 (76.9%)</u>
Pathology type	
– Endometrial	60 (76.9%)
– Serous	9 (11.5%)
– Sarcoma	2 (2.6%)
– Other	7 (8.9%)
Extraction technique	
– Vaginally intact	31 (39.7%)
– Vaginally intact with specimen bag	12 (15.4%)
– Small laparotomy	18 (23.1%)
– Vaginal morcellation	3 (3.8%)
– Morcellation in specimen bag	14 (17.9%)



# Operative Outcomes and Specimen Weights By Extraction Technique

	Vaginally intact	Vaginally intact in specimen bag	Small laparotomy	Vaginal morcellation	Morcellation in specimen bag	P-value
Mean specimen weight in grams (range)	307g (250-581)	337g (258-508)	<b>677g</b> (253-1268)	321g (275-409)	361g (254-582)	0.0001
Perineal/vaginal Laceration	10 (32%)	7 (58%)	1 (6%)	2 (67%)	7 (50%)	0.296
Mean length of stay (days) (sd)	0.4 (0.4)	0.8 (0.6)	1.0 (0.6)	1.7 (0.6)	0.5 (0.5)	0.0016
Mean length of surgery (minutes) (sd)	163 (36.6)	214 (55.6)	<b>237</b> (50.2)	178 (70.6)	212 (61.4)	0.0001
Number of 30 day readmissions	1	1	0	0	0	0.5148



# Extraction Details

Extraction technique	Fibroids	Tumor Spill
Vaginally intact	16	N/a
Vaginally with specimen bag	9	N/a
Vaginal morcellation	2	0
Vaginal morcellation in specimen bag	6	1
Small laparotomy incision	16	N/a
<u>Total</u>	49	1



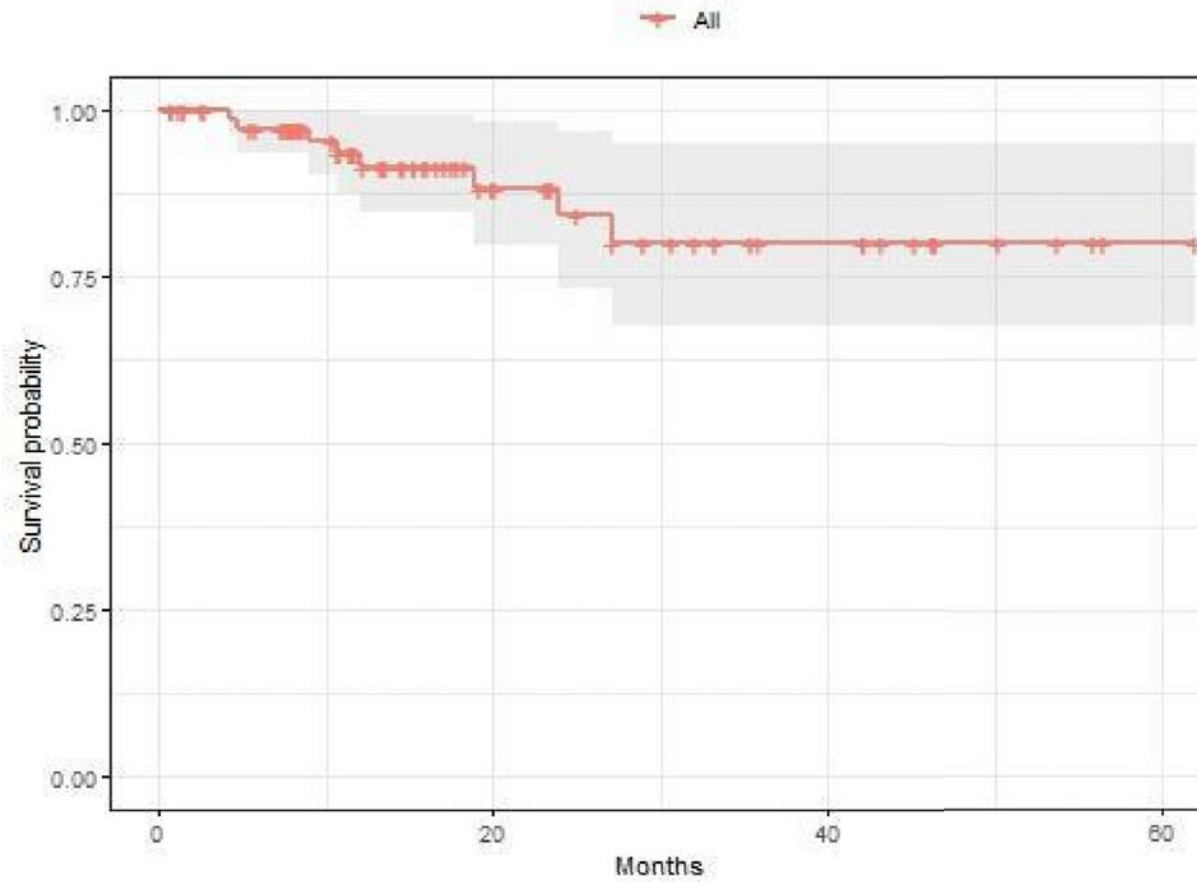
# Cancer Outcomes

	<u>Total</u>	Intact	Mini-laparotomy	Morcellation	P value
Chemotherapy	15 (36.6%)	8 (19.5%)	5 (12.2%)	2 (4.9%)	0.5889
Radiation	26 (63.4%)	13 (31.7%)	3 (7.3%)	10 (24.4%)	0.0177
Recurrence	8 (10.3%)	3 (37.5%)	2 (25%)	3 (37.5%)	0.4078
Death	6 (7.7%)	2 (33.3%)	2 (33.3%)	2 (33.3%)	0.5369



# Overall Recurrence Free Survival

Recurrence Free Survival

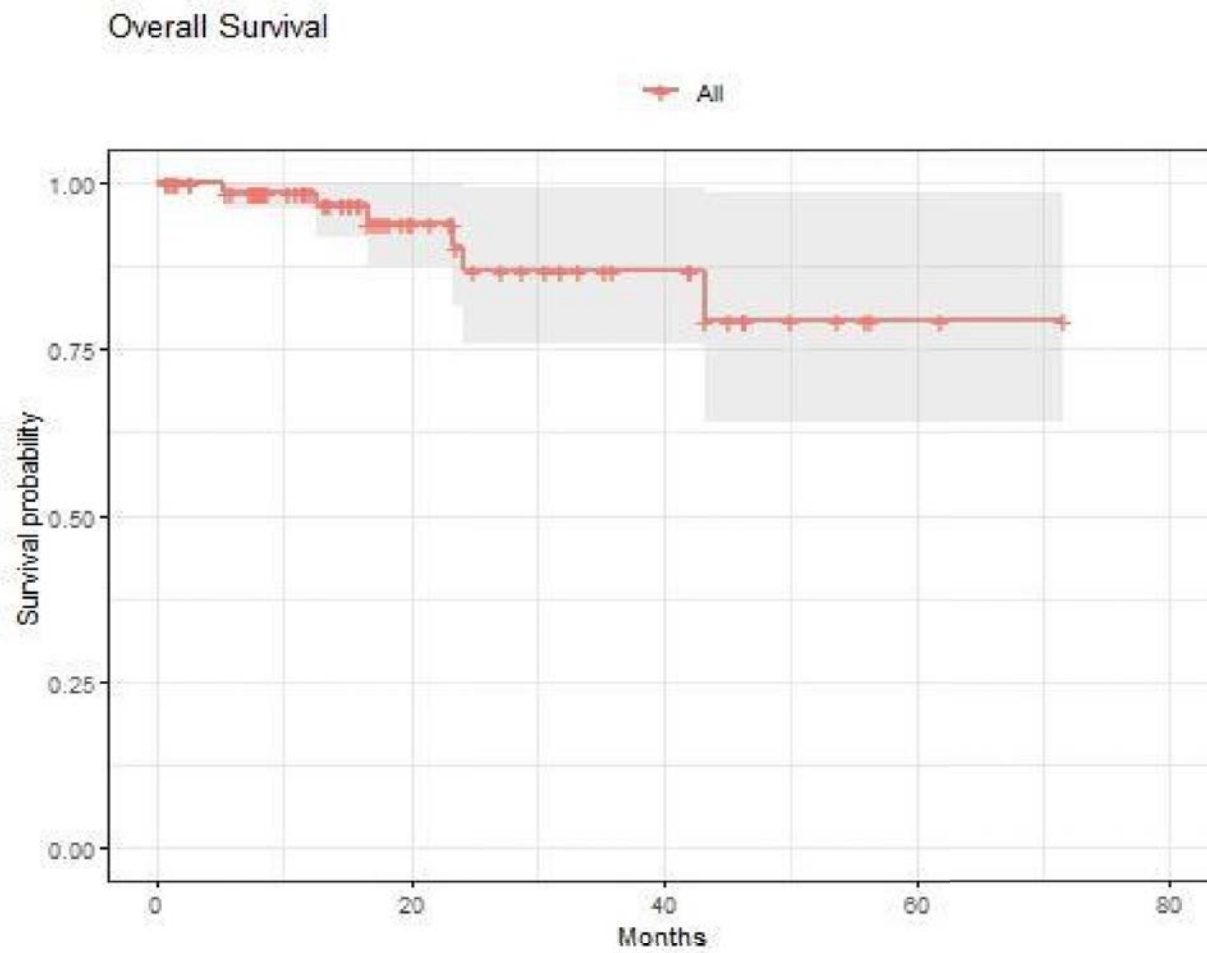


Recurrence Free Survival

All	78	26	12	1
-----	----	----	----	---



# Overall Survival



Overall Survival

Survival Probability	78	30	14	2	0
All	78	30	14	2	0



## DISCUSSION

- OPERATIVE TIME
- UTERINE CANCER ENLARGED – MIS?
- MORCELLATION METHOD



## DISCUSSION (CONT)

- MINI-LAPAROTOMY vs OPEN SURGERY
- PREOPERATIVE IMAGING
- PROGNOSTIC IMPLICATIONS OF ENLARGED UTERUS

## CONCLUSIONS

- MIS FEASIBLE IN MAJORITY OF UTERINE CANCERS
- 8.1% HAD ENLARGED UTERI
- SMALL LAPAROTOMY - LARGER UTERI AND LONGER OPERATIVE TIMES

## CONCLUSIONS (CONT)

- COMPLICATIONS WERE MINIMAL
- PATHOLOGIC ANALYSIS
- PFS AND OS

THANK YOU!